



MACHIMANA PROPERTIES

Building Africa Together

COMPANY PROFILE





Innocent Dear Machimana
Managing Director

ABOUT US

We are a South African based construction company passionate about sustainable development of the economy through robust infrastructure delivered cost effectively and on time. We have a diverse team of experts whose training and experience gives us the vantage point when analyzing a client's needs; prescribing efficient solutions; conceptualization; executing the solution; procurement and supply of materials and project management ensuring deadlines and financial goals are met. **Machimana Properties** is your turnkey partner in construction and engineering.

CORPORATE AND SOCIAL RESPONSIBILITY

We give back to our community through donating and creating employment for the previously disadvantaged, as well as the disabled in our community.

The Non Government Organisation sponsored by Machimana properties is Mission Restoration Foundation. Please refer to www.missionrestoration.co.za

OUR VISION

- To promote locally economic development by becoming the major player in the property developer sectors

OUR MISSION

- To contribute to locally economic growth by delivering the best serviced and products

OUR VALUES

Given our vision and mission, we would like to grow into a remarkable property developer and serving our clients through:

- Professionalism
- Adaptability
- Accuracy
- Honesty
- Reliable
- Rustworthiness





CO REG NO:
2012/160611/07

TAX PIN:
D881DF2E1

CIDB GB2 CRS NO:
9100594184

COIDA NO:
990001108811

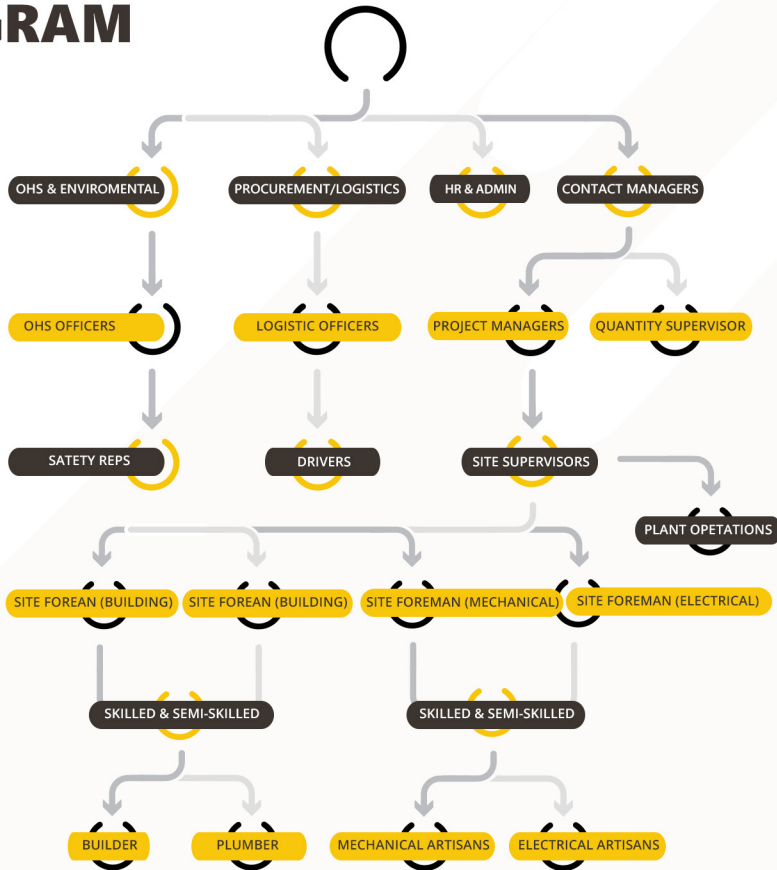
NHBRC NO:
1-1 46917787

CSD NO:
MAAA0003737

CIBD C1 CRS NO:
9100594184



ORGANOGRAM





SERVICES

Our business is divided into five divisions. This approach is to assign experienced professionals within the relevant fields.

We believe the key to innovation is focused troubleshooting which ties to our goal of setting trends within the industry.

We offer turnkey solutions from consultation, through procurement and supply, project managing the process until we deliver the final product.

Projects can easily miss their deadlines and go over budget.

Our turnkey approach guarantees you one source of accountability which accelerates decision making and expediency.

Property Developers & Rental

Plastering

Electrical

Plumbing

Painting

Tiling

Paving

Waterproofing

Carpentry

Fencing

Building & Construction

Tree felling & Garden service

Landscaping & Water Irrigation

Civil Engineering

Road marking

Concrete works

Road signs

Aluminium Windows

Building Renovations

House Plans





BUILDING CONSTRUCTION

- Schools, Hospitals, Government Offices
- Shopping complexes, large housing developments, office parks
- Residential homes
- Industrial Buildings (Warehouses, manufacturing plants)
- Renovations
- Maintenance and Repair

HOUSING PROJECTS

As a black owned company, we have a special understanding of the need for dignified housing for those disadvantaged by social injustices.

With this in mind we have a dedicated division for low cost housing, housing for mining workers and other government funded housing.

- Low cost housing projects
- Reconstruction and Development Programme (RDP) Housing projects
- Housing for miners
- Corporate funded housing projects



CIVIL ENGINEERING

Machimana Properties has a team of experienced engineers and a workforce to execute any civil works project. We have a network of professionals we engage to equal any task. We are positioned to facilitate private-public partnerships to successfully finance and deliver infrastructural developments.

AREAS OF FOCUS

- Roads and storm water
- Railways
- Bridges
- Pump Stations and Pipelines
- Reservoirs
- Sewer System & Sanitation
- Pavement rehabilitation

ENGINEERING SERVICES

- Feasibility Studies & Impact Assessments
- Design
- Design Management
- Project Management
- Bid Coordination & Management

MECHANICAL SERVICES

- Air conditioners and mechanical verification
- Boiler installations and steam distribution
- Steel fabrication and erection



GENERAL ELECTRIC SERVICES

- Electrical maintenance and repair
- Thermal testing of electrical equipment and detail reports
- High voltage equipment installations and testing

INDUSTRIAL ELECTRIC SERVICES

New construction, repair, improvements and additions

- Design/Build
- Plant Lighting – new, retrofit and upgrades
- Manufacturing equipment installations
- Electric utility services and distribution

COMMERCIAL ELECTRIC SERVICES

New construction, repair, improvements and additions

- Design/Build
- New lighting installations- retrofit and upgrades
- Lighting controls
- Repair, troubleshooting of existing electrical systems
- Upgrade of existing electrical services and distribution
- Installation of emergency systems, generators and UPS
- Site lighting installations and repairs
- Parking lot lighting installations and repairs.



ROAD MARKING

Road markings are provided to satisfy requirements for driver guidance, in terms of the geometric arrangement of their longitudinal and lateral alignment and location.



ROAD MAINTAINANCE

Road maintenance is the process of preserving and keeping the road structure as normal as possible and practicable.

Road maintenance brings immediate and sometimes dramatic benefits through improved safety, comfort, and low vehicle operation cost.



KERBS

Concrete kerbs are an integral component in the urban transport and water management setting.

Serving a pivotal delineation role in roads, highways, footpaths, drainage, parking spaces and more, the need for durable, trustworthy kerbing cannot be overemphasized.



CONCRETE WORK

When it comes to concrete work, there are a lot of options.

Whether you need new concrete poured or old concrete repaired, it is best to do your research before starting your project.



ROAD SIGN INSTALLATION

SA Road Signs, Traffic Signs, Delineators, Traffic Cones, Road Sign Supplier We specialize in the manufacture and supply of temporary and permanent traffic signs



REFERENCES

COMPANY: BIG FOX CIVILS

Director: Stanley Mandzivhadila

Tel: 073 706 2007

COMPANY: UNYREC CONSTRUCTION

Director: Lebogang Ledwaba

Tel: 081 446 2248

COMPANY: EXUBERANT GROUP

Director: S. Bvuma

Tel: 076 299 1015

COMPANY: P. T MOTORING

Director: P. T Maluleke

Tel: 079 866 7953



TELEPHONE

+2783 657 9976

+27 012 757 8705

ADDRESS

193 Silver Street

Muckleneuck, Pretoria

0002

EMAIL ADDRESS

machimana.dear@gmail.com

WEBSITE LINK

www.machimanaproperties.co.za